

Manitoba

ANGLERS' GUIDE 2021

MANITOBAFISHERIES.COM





Whether it's a planned adventure or a spur of the moment trip, we know that fishing is more than the thrill of a great catch, it's a way of life. At Alumacraft, we build our aluminium boats to refine the experience, making it smoother on and off the water, so your adventures are hassle-free and you can spend your time where it matters - catching fish.



ALUMA*Craft*

EST. 1946

YOUR FISHING FREEDOM

HUMMINBIRD LAKEMASTER MANITOBA

The NEW Humminbird LakeMaster® MANITOBA map card offers the most High Definition survey coverage available in Manitoba and NW Ontario.

Featuring over **100 HD surveyed waters** in incredible 1 foot contour detail, from Humminbird's team of surveyors - Including ALL of Lake of the Woods and Rainy River. PLUS numerous additional lakes and waterways in Standard Definition detail.

Combining superior lake maps with the advanced features of Depth Highlight, Shallow Water Highlight, Water Level Offset and Follow the Contour with Minn Kota's iPilot® Link™, Humminbird LakeMaster provides anglers with unrivaled detail and functionality.

> humminbird.com/lakemaster



SIMPLY. CLEARLY. BETTER.



Contents

What's New for 2021	2
Pending Changes	2
Possible Changes	2
Barbless Hooks	2
Fishing Methods	2
Licences	3
Fees	3
Exemptions	3
Purchase an Angling Licence	3
General Regulations	3
Angling and Ice Fishing	3
Ice Fishing Shelters	3
Fish Remains	4
Bait	4
Aquatic Invasive Species	4
Dip Netting, Cast Netting, Seining, and Minnow Trapping	4
Spear Fishing	4
Bow Fishing	4
Holding and Releasing Fish	4
Competitive Fishing Events	4
Buying and Selling Fish	4
Fishways (Fish Ladders)	5
Handling, Transport and Storage of Fish	5
Border Waters	5
Limits	5
Fishing Divisions Map and Seasons	8
Southern Division Regulations	8
Northwest Division Regulations	13
North Central Division Regulations	16
Northeast Division Regulations	16
Status Indian Information	17
Manitoba Agriculture and Resource Development Offices	17
Common Manitoba Fish Species	18
Master Angler Application	19

Regulations are also available online at www.manitobafisheries.com.
New regulations are in **bold type**.

This publication is available in alternate formats, upon request.

What's New for 2021

The regulations in this guide take effect on April 1, 2021. The following regulations are new for 2021.

- **Marge Lake – walleye limit is 2 and all walleye shorter than 35 cm must be released.**
- **Bradley Lake – provincial smallmouth bass limits and size restriction.**
- **Mirror Lake – trout limit is one and closed to all fishing from September 15 to and including October 31.**
- **Summerhill Lake – walleye limit is 4.**

Pending Changes

The following changes fall under the Fisheries Act of Canada and require federal approval prior to becoming law.

- West Blue Lake will be added to the stocked trout waters list.
- Tees Lake will be added to the stocked trout waters list.
- Elgin Reservoir will be added to the stocked trout waters list.
- Lac du Bonnet Ponds – no motors, except electric motors, may be used.
- Goose River from the water control structure downstream to Goose Lake will be added to the stocked trout waters list.
- Beaver Lake (Duck Mountains) – will be removed from the stocked trout waters list.
- Mirror Lake – will be removed from the stocked trout waters list.



As Minister of Manitoba Agriculture and Resource Development, I welcome you to another year of fishing in Manitoba.

As someone who is passionate about angling, I am thrilled that this province offers an abundance of exceptional fishing opportunities for every angler to enjoy year-round.

From luxury fly-in fishing trips, to world-class urban angling, to exhilarating ice fishing adventures, Manitoba is the ultimate fishing destination!

In the following pages, you will find information on fishing regulations, licences, fees, and much more, all designed to help you plan your next angling adventure.

In 2021, we will be conducting a review of recreational angling regulations and seeking input from anglers and resource users to ensure we are managing Manitoba's recreational fisheries sustainably. We all have a responsibility to protect Manitoba's valuable fisheries and I hope you will become involved in shaping angling regulations in Manitoba. Please watch for more information throughout the year on how you can participate and provide your input.

Manitoba angling licences continue to be available to purchase online. Angling licences may also be purchased at select retail locations or by phone at 1-877-880-1203. For more information or to purchase an angling licence, please visit www.manitobaelicensing.ca.

On behalf of the Manitoba government, I wish you a safe and fun-filled angling season! Please enjoy the many benefits that a day of fishing in Manitoba has to offer.

Originally signed by,

Honourable Blaine Pedersen
Minister, Agriculture and Resource Development

Possible Changes

The Department of Manitoba Agriculture and Resource Development will be conducting a larger review of possible angling regulation changes. The Department will engage with Manitobans on changes in 2021. To stay informed on possible changes, visit: www.manitobafisheries.com or Engage MB for opportunities to provide your input into this review.

BARBLESS HOOKS

In Manitoba, anglers must use barbless hooks. A barbless hook is a hook with no barbs or barbs that have been compressed to be in complete contact with the shaft of the hook. Barbless hooks may have barbs on the shank for holding bait. When you are fishing, the hooks attached to all your lines, whether in use or not, must be barbless. Barbed hooks may be kept in the tackle box.

FISHING METHODS

Recreational fishing includes angling, spear fishing, bow fishing, dip netting, seining, and minnow trapping. Techniques are those generally accepted by anglers. Under no circumstances may explosives, firearms, clubs, snagging, snaring, poisons, etc. be used.

Licence Fees (includes GST)

	Conservation	Regular
Resident Senior (Manitobans 65 and over)	Free	See Resident regular licence
Resident (Manitobans age 16-64)	\$19.20	\$25.10
Canadian Resident (age 16 and over)	\$28.00	\$47.65
Non-resident (age 16 and over)	\$37.85	\$62.35

Note: An administration fee will be added to all angling licence fees above, except Resident Senior Conservation Licence.

Angling Licences

All persons, except those exempt below, who engage in angling, dip netting, cast netting, seining, minnow trapping, spear fishing, and bow fishing, must have a Manitoba Angling Licence on their person.

Licences are valid from May 1, 2021 through April 30, 2022. Licences must be signed to be valid, and are not transferrable or refundable. The time of licence validity has no impact on season dates. See page 8 for general season dates.

Manitoba Resident Seniors

A "Manitoba Resident Seniors Conservation Licence" is for seniors (65 and over) who have permanently resided in Manitoba for at least six months and is valid for a conservation limit of fish only. Manitoba seniors wanting a regular limit of fish must buy a regular resident licence.

Conservation Licence

A Conservation Licence entitles the holder to the same rights as a Regular Licence holder except for reduced limits for some species: 4 walleye/sauger, 4 pike, 1 lake trout, 1 channel catfish, 2 smallmouth bass and 2 stocked trout. Limits for other species remain the same.

Resident or Non-resident?

A resident is a person who has lived in Manitoba for the immediate past six months. A Canadian resident is a person who has lived elsewhere in Canada for the immediate past six months. Any person who has not lived in Manitoba or Canada for the immediate past six months is a non-resident and must purchase a non-resident licence.

LICENCE EXEMPTIONS

The following people may angle without a licence:

- Any youth under the age of 16 who has permanently resided in Manitoba for at least six months. Manitoba youth under the age of 16 have all the rights and privileges of those holding a Regular Licence, including their own regular limit of fish. All other regulations apply. Proof of age is required when checked by a Conservation Officer.
- Any Canadian resident or non-resident youth under the age of 16. The person must fish with a licence holder, or someone exempt from holding a licence, and their catch must be applied to the limit of that person. A Canadian resident or non-resident youth under 16 who wishes to have a separate limit must buy a licence.

STATUS INDIANS

Status Indians do not require an angling licence. They are exempt from angling regulations including seasons, limits, and gear restrictions when fishing for food. Proof of status is required when checked by a Conservation Officer or RCMP Officer (see page 17).

NATIONAL PARKS

A Manitoba Angling Licence is not valid for fishing in National Parks. Contact Parks Canada for details on fishing licences and regulations in National Parks. www.pc.gc.ca.

Purchase an Angling Licence

There are **three** options to obtain a Manitoba Angling Licence:

- Online at www.manitobaenergising.ca
- In-person at select issuers. A list of issuers is available online. Call ahead to ensure angling licences are sold.
- By phone at 1-877-880-1203. Allow 10 business days for delivery of angling licence. Please provide your correct mailing address.

Angling licences must be printed, signed and carried on you when fishing. Issuers and phone orders will provide you with a printed licence.

For online orders, you are responsible for printing your own licence.

First time customers: An account will need to be created, no matter which method you use to obtain your angling licence. You will be provided with a Customer Identification Number (CID#) to use for all your future orders. When obtaining an angling licence, please ensure you select the correct residency.

Returning customers: To obtain an angling licence, you will require your Customer Identification Number (CID#) in order to access your existing account whether done online, by phone, or in-person at a participating issuer. You were assigned a CID# when you ordered an angling licence or other licence/permit in 2020. Online accounts can also be accessed by using your registered secondary identification number and password.

A Manitoba Senior Conservation Angling Licence remains free of charge.

For more information, visit: www.manitobaenergising.ca or call 1-877-880-1203.

General Regulations

Recreational fishing in Manitoba is governed by regulations made under The Provincial Fisheries Act and the Fisheries Act of Canada. **This guide provides a summary of those regulations. The actual regulations in force, not necessarily those in this guide, shall apply.** Regulations other than those under the Fisheries Act of Canada may also apply while fishing, e.g. regarding Aquatic Invasive Species, the use of boats, motors, vehicles, etc. For more details on regulations contact your local Manitoba Agriculture and Resource Development Office (see page 17).

NOTE:

- Open fires** are prohibited in the Burning Permit Areas of Manitoba from April 1 to November 15, unless the fire is in an approved fire pit. If approved fire pits are not available, shore lunches and other meals must be cooked over a camp stove. For more information on Burning Permit Areas, contact your local Manitoba Conservation and Climate Office.
- Littering** is prohibited (under the Environment Act) and regulations are enforced by Manitoba Agriculture and Resource Development.
- Open liquor** (including beer) is prohibited in boats, vehicles and ice fishing shelters (under the Liquor and Gaming Control Act) and regulations are enforced by Manitoba Agriculture and Resource Development.

ANGLING AND ICE FISHING

Angling is fishing with a hook and line. The use of any unusual or special gimmicks is often illegal and best avoided. Hooks or lures must not be spring-loaded.

Anglers may use only one rod and line, except during ice fishing when two may be used. Only two hooks or lures may be used per line. Anglers must, when fishing in open water, keep their line in sight at all times and when ice fishing stay within 50 m of the line.

ICE FISHING SHELTERS

Ice fishing shelters must be removed by March 13, 2022 on the Red River, by March 31 in the rest of the Southern Division and by April 15 in the Northwest, North Central and Northeast Divisions, or when requested to do so by a Conservation Officer due to unsafe ice conditions. **All ice fishing shelters must clearly display the owner's name and address.** Shelters must be stored or disposed of away from the shore and on private property. Manitoba Parks and Protected Spaces branch requires that ice fishing shelters in provincial parks meet size, location and use standards. For more information including specific details, please contact your local Manitoba Agriculture and Resource Development Office.

FISH REMAINS

Fish cleaning remains must not be left on beaches or shorelines. At sites such as boat launches, campgrounds, lodges, etc., fish remains must be placed in containers provided for that purpose.

BAIT

Night crawlers and earthworms may be used as bait in all fishing divisions in Manitoba. They may be imported to Manitoba in a sterile medium such as paper mulch, but not in soil. Dispose of unused worms in the trash.

Leeches, frogs and salamanders (water dogs) may also be used as bait in all divisions. However, they may not be imported.

Possession of crayfish is prohibited.

Offal (fish cleaning remains) may be used as bait in all divisions. Frozen or preserved bait fish may be imported and used in all divisions.

Live bait fish may not be imported into Manitoba.

Live bait fish may not be used or possessed in the Northwest, North Central and Northeast Divisions, including the Bloodvein and Gammon rivers. Live bait fish may be used and possessed in the Southern Division, except in the following areas:

- Stocked Trout Waters
- Duck Mountain Provincial Forest and Park
- Turtle Mountain Provincial Park
- Porcupine Provincial Forest
- Whiteshell Provincial Park
- Winnipeg River (from Seven Sisters Dam to the Ontario border)
- Atikaki and South Atikaki Provincial Parks

Those anglers in possession of purchased live bait fish must have a Live Bait Fish Transfer and Use Receipt issued by the dealer. Anglers may catch their own bait fish, but must kill them before transporting them away from the water where they were caught.

Only the following fish may be used as bait:

chub	trout-perch	tullibee (cisco)
shiner	stickleback	sculpin
mudminnow	fathead minnow	darter
sucker	bluntnose minnow	dace

No angler may be in possession of more than 4 litres of bait fish of which no more than 15 dozen can be live bait fish (excluding suckers and tullibee, which have no limit).

Yellow perch, goldeye, and mooneye, that have been caught by angling, may also be used as bait and may be used as live bait fish where use of live bait fish is allowed. Anglers may only possess a legal limit of these species. Common carp, goldfish, and rainbow smelt, except for purchased frozen smelt, may not be used as bait.

Note: dispose of bait possessed in an Aquatic Invasive Species Control Zone before leaving the shore.

For more information, visit: Manitoba.ca/StopAIS

AQUATIC INVASIVE SPECIES (AIS)

Set fines for AIS offences are in effect. To stop the spread of AIS, you must:

1. CLEAN i.e., remove AIS and aquatic plants (i.e., weeds) before leaving the shore of the waterbody.
2. DRAIN all water from the watercraft and water-related equipment before leaving the shore. All drain plugs must be kept out while transporting watercraft over land.
3. DRY completely or decontaminate water-related equipment before placing into another waterbody.
4. DISPOSE of bait possessed in an AIS Control Zone prior to leaving the shore, regardless of a three day Live Bait Fish Transfer and Use Receipt.
5. DECONTAMINATE IF watercraft or water-related equipment were used last in an AIS Control Zone and before placing into another waterbody.

For more information, visit: Manitoba.ca/StopAIS

DIP NETTING, CAST NETTING, SEINING, AND MINNOW TRAPPING

An angling licence is required while dip netting, cast netting, seining, or minnow trapping. In most waters these activities are allowed at any time of the year. Check for closures on specific waters in the divisional sections of this guide.

Species that may be kept include suckers, common carp, burbot, bullheads, tullibee, chub, shiners, darters, dace, fathead minnow, bluntnose minnow, mudminnow, trout-perch, stickleback, sculpin and whitefish. All other species must be released immediately. Live fish may not be transported away from the waters where they were caught. Fish must be dead before transporting. Water from the waterbody may not be transported away from the shore. General creel limits apply.

Dip nets may not be larger than one square metre. Seine nets and cast nets may not be larger than three square metres. Minnow traps must not be larger than 65 cm long and 35 cm in diameter, and must have the fisher's name and address marked on them.

SPEAR FISHING

Spear fishing is the taking of fish with a handheld spear or spear gun (pneumatic or rubber band powered) while swimming. Spear fishing is allowed in all areas of the province open to angling. For safety reasons do not spear fish near areas used for swimming, boat launching, or docking.

Angling seasons, limits and licence requirements apply. Fisher's may possess only one limit of fish, whether taken by spear fishing or angling.

You may not spear fish for sturgeon, largemouth bass, smallmouth bass, muskellunge, Arctic grayling, Arctic char, brown trout, rainbow trout, brook trout, splake or other trout hybrids. Only face mask, flippers and snorkel may be used to take the following species (i.e. no scuba equipment): walleye, sauger, pike, channel catfish, crappies, mooneye, goldeye, lake trout and whitefish.

Scuba or snorkelling equipment may be used for species other than those listed above. For safety courses and information please contact your local scuba dealer.

BOW FISHING

Bow fishing (the shooting of fish with archery equipment) is permitted for common carp and suckers only. **Bow fishing is not permitted during the general closure.** Angling seasons and licence requirements apply. A fish arrow and at least 20-kg test line must be used. Using a crossbow to fish is illegal.

HOLDING AND RELEASING FISH

Fish being legally retained may be held live only while you are actively fishing, and they must be held within 25 m of you.

If you release fish, they must be released unharmed into the water from which they were taken. They must not be tagged or marked in any way, unless authorized by a permit.

COMPETITIVE FISHING EVENTS

Persons and organizations holding fishing derbies or tournaments that have 25 or more participants must obtain a free Competitive Fishing Event Licence four weeks prior to the event. A licence can be obtained online at: www.manitobaelasticensing.ca or at a regional Manitoba Agriculture and Resource Development office (see page 17). Contact a regional office for more information.

All participants must have a Manitoba Angling Licence unless exempt (see page 3). All walleye, sauger, trout, smallmouth bass, and channel catfish entered must be released. All fish caught and retained for use in a Competitive Fishing Event are considered to be in possession and part of the angler's daily limit. Event organizers and all participants must adhere to the Aquatic Invasive Species (AIS) Regulation under The Water Protection Act. Further restrictions may be imposed. Set fines for AIS offences are in effect.

BUYING AND SELLING FISH

Fish harvested while angling may not be bought, sold, traded or bartered. **If you buy fish from a commercial fisher or retailer be sure to get a sales receipt or trade record at the time of sale.** You must carry this receipt with the fish as proof of purchase.

General Limits

NOTICE OF INDIVIDUAL REGULATIONS

The possession and size limits listed below are general, provincial regulations, and apply to most Manitoba waters. A number of waters and fishing divisions in Manitoba have special, individual regulations. These exceptions and/or additions to the general regulations are found in the individual fishing divisions on pages 8-10; 13; 16-17.

Species	Conservation Licence	Regular Licence	Species	Conservation Licence	Regular Licence
Arctic Char	8	8	Smallmouth Bass		
Arctic Grayling - only one may exceed 40 cm	3	3	- only one may exceed 40 cm	2	4
Black Crappie	6	6	Stocked Brook, Brown, & Rainbow Trout; Splake & other Trout hybrids; & Arctic Char (any species or combination)		
Brook Trout (except stocked trout waters) - none may exceed 45 cm	1	1	- only one may exceed 45 cm	2	3
Brown & Black Bullhead	25	25	Sturgeon	0	0
Channel Catfish - none may exceed 60 cm	1	4	Walleye (Pickerel) & Sauger (either or combined)		
Freshwater Drum - none may exceed 60 cm	10	10	- only one may exceed 55 cm	4	6
Goldeye & Mooneye (either or combined)	10	10	White Bass	25	25
Lake Trout - only one may exceed 65 cm	1	2	Whitefish	25	25
Largemouth Bass	0	0	Yellow Perch (Southern Division)	25	25
Muskellunge	0	0	- all other divisions	no limit	no limit
Northern Pike (Jackfish) - only one may exceed 75 cm	4	6	All Other Species	no limit	no limit
Rock Bass	6	6			

Limits and Possession

Fish are considered to be in possession if they are not immediately released into the water from which they were taken. Possession limits are the same as daily catch limits in Manitoba. You may possess no more than one limit of each kind of fish at any time. This includes all fish you have in hand, camp, transportation, at home or for use in a competitive fishing event. The limits on this page apply to most Manitoba waters. Special limits on specific waters are listed in the individual fishing divisions (pages 8-10; 13; 16-17).

Measuring a Fish

Total fish length is measured from the most anterior part of the head to the most posterior part of the tail laid flat (i.e. not pinched). See page 19 for an illustration. Note: 2.54 cm = 1 inch.

High Quality Management Waters

High Quality Management Waters may have reduced possession and size limits to protect and maintain high quality fisheries. They are listed in the individual fishing divisions (pages 8-10; 13; 16-17).

FISHWAYS (FISH LADDERS)

Fishways are used to assist fish passage through, over or around barriers. Please respect these structures when in use and do not disturb the fish. Remember, it is a violation to fish (including dip netting, seining and minnow trapping) within 23 metres of a fishway.

HANDLING, TRANSPORT AND STORAGE OF FISH

Live fish may not be transported away from the waters where they were caught, except under the authority of a permit issued by Wildlife and Fisheries Branch.

Fish must not be handled, transported or disposed of in a way that will allow it to spoil. Water from the waterbody may not be transported away from the shore or used to transport or store fish.

Fish must be transported and stored so that the number, species, and size of fish can be determined. **Six square centimetres of skin must be left on each fillet.** Fish should not be transported or stored in a solid frozen block of fillets or in a processed state such as canned.

If due to extenuating circumstances, you need to transport fish belonging to another angler, in addition to your own limit, you must obtain a Fish Transportation Loadslip from a Manitoba Agriculture and Resource Development Office (see page 17).

Persons transporting fish into Manitoba that were caught outside Manitoba should obtain physical proof of the origin of the fish before it is transported.

BORDER WATERS

Anglers who are on or in the immediate vicinity of lakes or rivers that cross a Manitoba border may have only a Manitoba limit of fish.

Anglers may have either a Manitoba or Ontario Angling Licence (or be exempt from holding one) to fish on all of Davidson Lake, Frances Lake, Garner Lake, High Lake, Mantario Lake, Moar Lake and Ryerson Lake, and either a Manitoba or Saskatchewan Angling Licence (or be exempt from holding one) to fish on all of Lake of the Prairies upstream from the Shellmouth Dam; only one licence is required.

Anglers who have an Ontario Angling Licence may fish on the Manitoba portion of Artery Lake without a Manitoba Angling Licence.

Catch and Release Tips

- Play your fish as little as possible.
- Return it to the water quickly.
- Don't hold it by the eyes or gills.
- Don't squeeze its belly.
- Never release fish that have been held on a stringer.
- Don't recommend fizzing of fish.

Licensed Outfitters

If you will be using an outfitter, please book with a licenced outfitter who is licenced to offer angling. A list of licenced outfitters is available online at: https://www.gov.mb.ca/sd/permits_licenses_approvals/lic-res-tourism-operators/index.html



Luxury Experience
& *Reel* Social Distance

aikenslake.com

Fish and Wildlife Enhancement Fund

FWEF supports projects designed to conserve or increase Manitoba fish and wildlife populations.

The Fund also holds an annual art competition. The winning artwork is produced as a stamp on Manitoba fishing licences and is a reminder of the important contribution Manitoba anglers play in supporting conservation of fish and their habitats throughout the province.

For more information about FWEF, how to apply for funding or to purchase limited edition prints and stamps:

Visit FWEF.ca

Email FWEF@gov.mb.ca



"Arctic Char" - Artwork By: Al Dutcheshen

CAGE ANYTHING THAT SWIMS!

TELESCOPIC HANDLE
WITH PUSH-LEVER
DEPLOYMENT AND
STRONG YOKE BACKED
BY LIMITED LIFETIME
WARRANTY!

CONSERVATION
FOCUSED
NETTING



CLAM

CLAMOUTDOORS.COM/NETS

WE HAVE THE HUB SHELTER FOR YOU!

The leader in hub shelters now offers an economical hub shelter to go with the newly redesigned X-Series shelters. Both offer great comfort and space. And both use 11mm fiberglass poles and heavy-duty denier fabrics. With eight models to choose from, Clam Outdoors has the right hub shelter for you.



CLAM SERIES

X SERIES

LEARN MORE AT clamoutdoors.com



MORE CATCHES.
MORE CONNECTION.

FISH FOR

MORE

© 2021 Johnson Outdoors Marine Electronics, Inc. All Rights Reserved.



There's always more out there. Bigger fish. Bigger challenges. Bigger moments. So we build the gear that helps anglers do more. Trolling motors and shallow water anchors that let you find fish, stay on fish and bring them in. Advanced technology that's as tough as it gets. Because when you fish with us, you fish for more.

➤ minnkotamotors.com/more



PERFORMANCE GEAR
DESIGNED BY ANGLERS, FOR ANGLERS

SHOP ONLINE / VISIT YOUR LOCAL FXR DEALER TODAY



FXRPROFISH

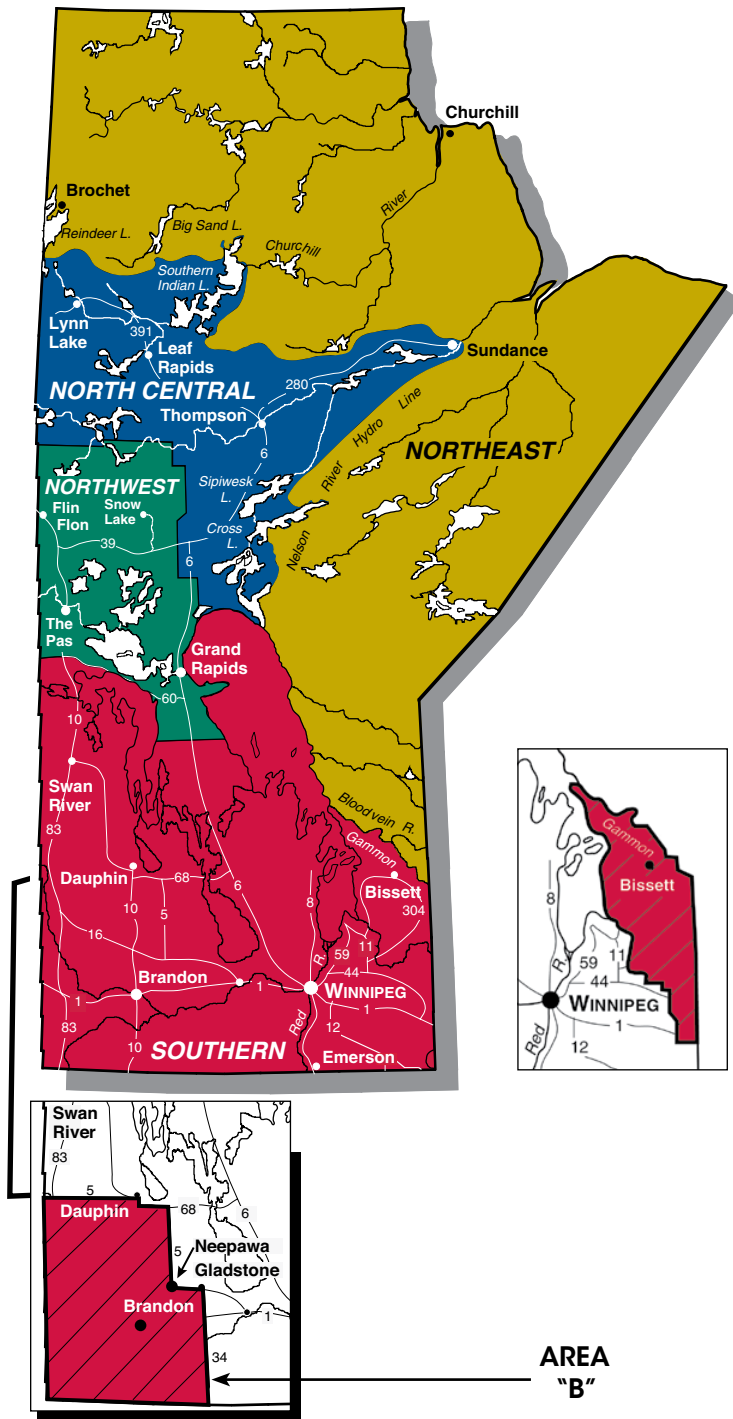


@FXRPROFISH



WWW.FXRRACING.COM

Fishing Divisions



SEASONS

- Southern Division**
Generally closed from April 5 to and including May 14, 2021.
Season opens May 15, 2021.
- Northwest Division**
Generally closed from May 1 to and including May 21, 2021.
Season opens May 22, 2021.
- North Central Division**
Generally closed from May 1 to and including May 21, 2021.
Season opens May 22, 2021.
- Northeast Division**
Generally open to angling all year.

Southern Division Regulations

General Closure: April 5, 2021 to and including May 14, 2021. Season opens May 15, 2021 (refer to map at left for Southern Divisional boundaries).

In 2022, the general closure in the Southern Division starts April 4, 2022 to and including May 13, 2022. Season opens May 14, 2022.

- Barbless hooks must be used.
- Use of live bait fish is allowed in some areas (see page 4).
- All lake trout must be released between September 15 to and including October 31.
- **All lake trout over 65 cm must be released.**

HIGH QUALITY MANAGEMENT

High Quality Management Waters in the Southern Division are listed below. All have limits of 4 walleye/sauger, 4 pike and 2 smallmouth bass with the exception of that portion of the Winnipeg River described below in which the limit is 0 for smallmouth bass.

- ◆ Echo Lake ◆ Saddle Lake ◆ Side Saddle Lake
- ◆ Winnipeg River from Ontario Boundary to Point Du Bois Dam (including Green Bay). All pike between 75 cm and 110 cm must be released.

STOCKED TROUT WATERS

No bow fishing, dip netting, or seining is allowed on stocked trout waters. In Duck Mountain Provincial Park, and in Porcupine Provincial Forest, all trout smaller than 35 cm must be released, except those caught in streams. Annual stocking lists are available from your local Manitoba Agriculture and Resource Development Office (see page 17).

The trout lakes, ponds and reservoirs listed below are open to fishing all year. All walleye, pike and smallmouth bass caught in these waters from April 5, 2021 to and including May 14, 2021 must be released. The trout creeks and rivers listed below are closed to all fishing from November 1 to and including April 15.

No motors may be used on those waters marked with an ~.

No motors, except electric motors, may be used on those waters marked with an *.

- * Antons Lake - trout limit is two.
- Bagguley Lake
- Bear Lake (W of Caddy L)
- Beautiful Lake
- * Beaver Lake (Duck Mountain)
- Birch River (E of Porcupine Forest)
- Black Beaver Lake
- Blueberry Pond
- Bower Lake
- Bowsman River
- * Camp Lake (NE of Falcon Lake)
- Childs Lake
- * Corstorphine Lake - trout limit is one and all trout over 45 cm must be released, may only use artificial lures and flies.
- Davidson Lake
- Dorothy Pond
- East Blue Lake (Duck Mountain)
- * East Goose Lake (S of Roblin) - trout limit is one and all trout over 45 cm must be released.
- Eternal Springs (lower and upper ponds)
- Forbes Lake - lake trout limit is one.
- Garland River
- Gass Lake (Porcupine Forest)
- George Lake - lake trout limit is one.
- Glad Lake (Duck Mountain)
- Gull Lake (Duck Mountain)
- Gull Pond (N of Camp Morton)

- Hadashville Pond
- * Hunt Lake
- Kinch Creek
- Kingfisher Lake
- Lac du Bonnet Ponds - all brown trout and tiger trout must be released.
- Lake 400
- Laurie Lake
- Limestone Pond
- * Little McBride Lake (NW of Boggy Ck)
- * Lyons Lake (S of W Hawk L)
- * McHugh Lake - trout limit is one, may only use artificial lures and flies.
- Milner Ridge Pond
- Mirror Lake (Porcupine Forest) - **trout limit is one and closed to all fishing from September 15 to and including October 31.**
- Nick Lake (Porcupine Forest)
- North Duck River
- O'Hanly Pond
- Olson Lake (Porcupine Forest)
- ~ One Lake
- * Patterson Lake - trout limit is one and all trout over 45 cm must be released, may only use artificial lures and flies.
- * Perch Lake (Duck Mountain) - all bass and trout must be released.
- * Persse Lake - trout limit is two, may only use artificial lures and flies.
- Pine River (Duck Mountain)

* Pybus Lake - trout limit is one and all trout over 45 cm must be released, may only use artificial lures and flies.

Quartz Pond

Raspberry Pond

Reynolds Ponds

Saskatoon Pond

* Shilliday Lake (Duck Mountain)

Snail Lake

Snowberry Pond

South Duck River

* Spear Lake (Russell Reservoir)

Steepprock River (Porcupine Forest)

Stony Creek (W of Neepawa)

Strawberry Pond

Tokaryk Lake

Tower Pond

Tugby Lake

* Twin Lakes - all trout must be released, may only use artificial lures and flies.

~ Two Lake (S. of Crowduck)

* Two Mile Lake (Duck Mountain)

* Vermilion Reservoir

Vini Lake (Porcupine Forest)

Wasp Lake - all tiger trout must be released.

* West Goose Lake - trout limit is one and all trout over 45 cm must be released, may only use artificial lures and flies.

West Hawk Lake

Whiteshell River between West Hawk and Caddy lakes - all trout must be released.

* William Lake (S of Boissevain)

DIP NETTING AND SEINING RESTRICTIONS

General regulations on dip netting and seining can be found on page 4. No dip netting or seining is allowed in any stocked trout waters. In Nopiming and Whiteshell Provincial Parks, and the Rennie River near Rennie, dip netting and seining for suckers and all species other than bait fish are prohibited year round.

Some streams are closed to all fishing (including dip netting) in spring to prevent damage to spawning fish and eggs.

Check for spring closures by stream or lake name in the following section.

Eastern Manitoba - Special Walleye Regulation for Area "A"

All walleye between 45 cm and 70 cm must be released in the area south of the Gammon-Bloodvein rivers to the south and west shores of the Winnipeg River, including the Manigotagan River upstream of highway 304, Lac du Bonnet, and the southern boundary of Whiteshell Provincial Park and from Lake Winnipeg to the Ontario border (excluding the Winnipeg River from the Pine Falls Dam to Lake Winnipeg).

♦ **Special Walleye Regulation Applies**

Southwestern Manitoba - Special Walleye Regulation for Area "B"

The walleye limit is 4 and all walleye shorter than 35 cm must be released south of highway 5 from the Saskatchewan border east to St. Rose du Lac, including all waterbodies west of highway 5 south to Neepawa, including all waterbodies south of highway 16 east to Gladstone and including all waterbodies west of highway 34 south to the US border;

Excluding, the Assiniboine River, Lake of the Prairies, Dauphin Lake tributaries, and Lake Wahtopanah and Little Saskatchewan River upstream to Riding Mountain National Park, including Rapid City Reservoir and Minnedosa Lake.

SPECIAL REGULATIONS FOR INDIVIDUAL WATERS

Basket Creek - closed to all fishing, including dip netting, from April 1 to and including May 14.

Beaver Lake - walleye limit is 2 and all walleye between 45 cm and 70 cm must be released.

Bell Lake - walleye limit is 2 and all walleye between 45 cm and 70 cm must be released. **All pike over 75 cm must be released.**

♦ **Big Whiteshell Lake** - cisco limit is 6 and only one may exceed 45 cm.

♦ **Black Lake** - walleye limit is 4.

♦ **Booster Lake** - walleye limit is 4.

Chain Lakes - no motors, except electric motors, are allowed.

Crawford Creek - see Dauphin Lake.

♦ **Crowduck Lake** - walleye limit is 2. All smallmouth bass over 40 cm must be released.

Dauphin Lake including that portion of the Mossy River to municipal road 107 west and all inflowing tributaries - the walleye/sauger limit is 4 and all walleye between 45 cm and 70 cm must be released. All inflowing tributaries and those parts of Dauphin Lake within 1 km of their mouths are closed to all fishing, including dip netting from March 1 to and including May 14. The remaining parts of Dauphin Lake remain open in March and are closed to all fishing from April 1 to and including May 14.

Dog Lake Drain - closed to all fishing, including dip netting, from April 1 to and including May 14.

Duck Mountain Provincial Park - walleye limit is 4. **All pike over 75 cm must be released.** See Beaver, Glad, Singush, Verrall, and Wellman lakes for specific regulations.

Dufaults Creek - closed to all fishing, including dip netting, from April 1 to and including May 14.

♦ **Falcon Creek** - closed to all fishing, including dip netting, from April 1 to and including May 31.

♦ **Flintstone Lake** - walleye limit is 4.

♦ **Garner Lake** - walleye limit is 4.

♦ **Gem Lake** - walleye limit is 4.

Glad Lake - all arctic char must be released. Only 1 pike may exceed 75 cm.

Gull Lake (near Beconia) - all pike over 60 cm must be released.

♦ **Hamilton Creek** - closed to all fishing, including dip netting, from April 1 to and including May 31.

Hamlin Drain - closed to all fishing, including dip netting, from April 1 to and including May 14.

♦ **Happy Lake** - walleye limit is 4.

Lake Irwin - pike limit is 4 and all pike over 75 cm must be released.

Lake of the Prairies and its tributaries, including the Shell River west of PTH 83 - walleye limit is 4; all walleye between 45 cm and 70 cm must be released. **All pike over 75 cm must be released.** Anglers may fish with either a Manitoba or Saskatchewan angling licence upstream from the Shellmouth Dam (see border waters - page 5).

Lake St. Andrew - all smallmouth bass must be released.

Lake St. George - all walleye between 45 cm and 70 cm must be released. **All pike over 75 cm must be released.**

Lake Winnipeg - anglers may retain only 1 walleye longer than 70 cm per year. Licence holders who catch and retain one of these fish must immediately record the date on the back of their licence.

Lake Winnipeg and its tributaries up to the first impassable barrier for fish - all walleye and sauger shorter than 35 cm must be released.

Lake Winnipegosis and its tributaries - the walleye limit is 4 and all walleye between 45 cm and 70 cm must be released.

Limestone Bay (on Lake Winnipeg) - closed to fishing all year.

Lonely Lake Drain - closed to all fishing, including dip netting, from April 1 to and including May 31.

♦ **Long Lake** - walleye limit is 4.

♦ **Manigotagan Lake** - walleye limit is 4.

Marge Lake - walleye limit is 2 and all walleye shorter than 35 cm must be released.

Mary Jane Reservoir - walleye limit is 4 and all walleye shorter than 35 cm must be released. Black crappie limit is 4.

Mink Creek - see Dauphin Lake.

Minnedosa Lake - see Wahtopanah Lake.

Minnewasta Lake - walleye limit is 4 and all walleye shorter than 35 cm must be released.

Moose Lake (near Sprague) - all walleye shorter than 35 cm must be released.

North Stepprock Lake - walleye limit is 2 and all walleye between 45 cm and 70 cm must be released. **All pike over 75 cm must be released.**

♦ **Obukowin Lake** - walleye limit is 4.

Ochre River - see Dauphin Lake.

Overflowing River - walleye limit is 4 and all walleye between 45 cm and 70 cm must be released. Closed to all fishing from April 1 to and including May 21.

Perch Lake - all smallmouth bass and trout must be released.

Porcupine Provincial Forest - walleye limit is 4. **All pike over 75 cm must be released.** See Bell, North Steeprock, Vini, and Whitefish lakes for specific regulations.

Proulx Creek and all other creeks and drains that intersect PR 328 to the east - closed to all fishing, including dip netting, from April 1 to and including May 14.

♦ **Quesnel (Caribou) Lake** - walleye limit is 4.

Rapid City Reservoir - see Wahtopanah Lake.

Red Deer River from Red Deer Lake to Lake Winnipegosis - walleye limit is 4 and all walleye between 45 cm and 70 cm must be released. Closed to all fishing from April 1 to and including May 21.

Red River from the Canada/US border to Lake Winnipeg and all tributaries between Lockport Dam and Lake Winnipeg - anglers may retain only 1 walleye longer than 70 cm per year. Licence holders who catch and retain one of these fish must immediately record the date on the back of their licence. The walleye/sauger limit is 4 and all walleye and sauger shorter than 35 cm must be released.

Red River from Lockport Dam to 1 km downstream - dip netting and seining for bait fish only, not suckers (excluding the Special Conservation Area); no bow fishing allowed.

Red River at St. Andrews Lock and Dam (Special Conservation Area for pelicans) - closed to all fishing and possession of fishing gear from April 1 to and including November 15. Boundary outlined below:

East: existing north-south chain link fence running along the top of the bank;

North: a line from the existing east-west chain link fence, extending into the Red River to the point directly north of the centre of the first freestanding bridge pier;

South: the dam face to the centre of the first freestanding bridge pier;

West: a line directly north of the centre of the first freestanding bridge pier to the point it intersects with the north boundary.

♦ **Rice Lake** - walleye limit is 4.

Shoal Lake (on the Ontario border) - all walleye/sauger must be released.

♦ **Shoe Lake** - walleye/sauger limit is 4. Pike limit is 4.

♦ **Siderock Lake** - walleye limit is 4.

Singush Lake - walleye limit is 2 and all walleye between 45 cm and 70 cm must be released. **All pike over 75 cm must be released.**

St. Malo Lake - no motors, except electric motors, allowed.

♦ **Summerhill Lake** - walleye limit is 4.

Turtle River from PTH 5 near Laurier to Dauphin Lake - see Dauphin Lake.

Valley River - see Dauphin Lake.

Vermilion River - see Dauphin Lake.

Verrall Lake - walleye limit is 2 and all walleye between 45 cm and 70 cm must be released.

Vini Lake - only 1 pike may exceed 75 cm.

Wahtopanah Lake and Little Saskatchewan River from the Rivers Dam upstream to Riding Mountain National Park, including Rapid City Reservoir and Minnedosa Lake - a limit of 4 walleye/sauger and all walleye/sauger between 45 cm and 70 cm must be released. That portion of Wahtopanah Lake and the Little Saskatchewan River from PTH 24 to the Trans-Canada Pipeline crossing on Wahtopanah Lake is closed to all fishing from April 1 to and including May 31.

♦ **Wallace Lake** - walleye limit is 4.

Waterhen Lake, Waterhen River, and all tributaries, including West Waterhen River, Little Waterhen River, and Snake River - walleye limit is 4. All pike over 75 cm must be released.

Wellman Lake - walleye limit is 2 and all walleye between 45 cm and 70 cm must be released. **All pike over 75 cm must be released.**

West Blue Lake - walleye limit is 4. No motors, except electric motors, allowed.

Whitefish Lake (in the Porcupine Forest) including the Marina Lagoon, North Creek and Whitefish Creek - walleye limit is 2 and all walleye between 45 cm and 70 cm must be released. **All pike over 75 cm must be released.** North Creek closed to all fishing from April 1 to and including June 1.

♦ **Whiteshell River from West Hawk Lake to Caddy Lake** - trout limit is 0; closed to all fishing from November 1 to and including April 15.

Winnipeg River between the Manitoba/Ontario border and the Pine Falls Generating Station - closed to lake sturgeon fishing all year.

Winnipeg River from Pine Falls Generating Station to Lake Winnipeg to and including Traverse Bay - anglers may retain only 1 walleye longer than 70 cm per year. Licence holders who catch and retain one of these fish must immediately record the date on the back of their licence. The walleye/sauger limit is 4 and all walleye and sauger shorter than 35 cm must be released.

Wilson River - see Dauphin Lake.

William Lake - smallmouth bass limit is 2; only 1 may exceed 40 cm.

Please Do Not Litter

The fine for littering in Manitoba is \$204.

Protection of Privacy Act

Personal information collected on angling licences falls under the authority of The Fisheries Act (Chapter F90), Fishing Licensing Regulation 124/97 and will be used only for existing program activities, surveys and enforcement by Manitoba Agriculture and Resource Development.

It is protected by the Protection of Privacy provisions of The Freedom of Information and Protection of Privacy Act. For questions about the collection, contact: 204-945-4170.

For Your Information

Manitoba Conservation Officers play an important educational role in relation to angling regulations. Officers check anglers on a regular basis and also periodically conduct roadside checkpoints in co-operation with other enforcement agencies. To help make your angling experience enjoyable, please be aware of Manitoba's angling and Aquatic Invasive Species (AIS) regulations.

The following are some set, ticketable fines for common angling and AIS offences. Fines may be higher depending on the severity and/or frequency of the offences. Restitution will apply to those who are convicted of illegally removing fish from the environment.

Using barbed hooks	\$52
Fishing without a licence.....	\$298
Over limit.....	\$102 plus
Transport live fish away from the water.....	\$486
Unattended line	\$52
Failure to carry your licence while fishing.....	\$174
Possession of crayfish	\$102 plus
Possession of AIS (e.g. zebra mussels).....	\$1,296
Failure to dispose bait used in an AIS Control Zone	\$672
Bringing into Manitoba live bait	\$202

For more information on AIS set fines, visit: Manitoba.ca/StopAIS

Mercury in Fish

Although Manitoba has some of the cleanest waters in the world, all fish contain some mercury from natural sources. Human activities can cause further increases in these natural mercury levels. Fish from some areas may have elevated mercury levels.

For further information about mercury in fish and for recommended consumption rates, please visit: manitobafisheries.com, or phone Manitoba Agriculture and Resource Development at 204-945-6784.

FLY-IN AMERICAN PLAN LODGE AND 15 REMOTE FLY-IN OUTPOST CABINS.



YOUR OUTDOOR
ADVENTURE
PROFESSIONALS

"FIRST CLASS" Service and Accommodations; together
with Fantastic Angling for Walleye,
Northern Pike and Smallmouth Bass.

If it's "A Hunt of a Lifetime" you desire,
then consider one of our Fully Guided Black Bear or Moose Hunts.

 www.jacksonslodge.com
204-345-8322

LAC DU BONNET MANITOBA, CANADA

Tonapah Lodge

www.tonapahlodge.com

ATHAPAPUSKOW LAKE

204-472-3889



GET HOOKED!

WHERE MONSTERS LIVE

ICE & OPEN WATER FISHING • DRIVE IN • TACKLE & BAIT
OPEN YEAR ROUND

LAKE TROUT • NORTHERN PIKE • WALLEYE • RAINBOW/BROOK TROUT

Protect Manitoba's trees.
**Don't move
firewood.**

EMERALD ASH
BORERS ARE
A THREAT!



Invasive species threaten Manitoba's trees.
The emerald ash borer and other insects live
in firewood. When firewood is moved between
locations, so are the insects.



**One log can kill
a million trees.**

Learn more at:
Manitoba.ca/stophthespread

Manitoba 



Representing Manitoba's resource based
tourism operators since 1988.

Have your voice heard, become a member today!

WWW.MLOA.COM
PHONE: 1-204-772-1912
Email: mloa@mloa.com

Follow us on social media!



Northwest Division Regulations

General Closure: May 1, 2021 to and including May 21, 2021.

Season opens May 22, 2021 (refer to map on page 8 for Northwest Divisional boundaries).

- Barbless hooks must be used.
- From April 1 to and including April 30 and from May 22 to and including May 31, the walleye limit is 4.
- No live bait fish allowed.
- All lake trout over 65 cm must be released.
- All pike over 75 cm must be released.
- All walleye over 55 cm must be released.

HIGH QUALITY MANAGEMENT

High Quality Management Waters in the Northwest Division are listed below. All have limits of 4 walleye/sauger, 4 pike and 1 lake trout.

These limits apply to all waterbodies in Grass River Provincial Park excluding Reed Lake (see Reed Lake regulation).

Alberts Lake	Koblun Lake	Rail Lake
Bacon Lake	Lac Aimee	Sewell Lake
Buzz Lake	Loonhead Lake	Snow Lake
Cacholotte Lake	McGhee Lake	Squall Lake
Centre Lake	McLeod Lake	Tait Lake
Cook Lake	Mikanagan Lake	Tramping Lake
Corley Lake	Morgan Lake	Twin Lake
Crow Lake	Niblock Lake	Vickers Lake
Deep Lake	Norris Lake	Wabishkok Lake
Dolomite Lake	Pineroot River	Whitefish Lake
Dow Lake	Podruski Lake	Woosey Creek
File Lake	Pothier Lake	Woosey Lake

STOCKED TROUT LAKES

No bow fishing, dip netting or seining is allowed on stocked trout waters. Annual stocking lists are available from your local Manitoba Agriculture and Resource Development Office (see page 17).

The following stocked trout lakes are open to fishing all year. All pike and walleye caught in these waters from May 1 to and including May 21 must be released.

Amphipod Lake	Kormans Lake	Webster Lake
Barbe Lake	One Portage Lake	
Foot Print Lake	Scotty Lake	

LAKE SPECIFIC REGULATIONS

Athapapuskow Lake - walleye limit is 4. The south end is closed to all fishing from September 15 to and including October 15. Quarry Bay and Quarry Bay Channel are closed to all fishing from May 1 to and including May 31. Pickerel Bay and Pickerel Bay Channel are closed to all fishing from May 1 to and including May 31.

Atik Lake - walleye limit is 4.

Burntwood Lake - walleye limit is 4 and pike limit is 4.

Clearwater Lake - the west side is closed to all fishing from September 15 to and including October 15, on a line northeast from the end of Spawn Camp Point to the west side of the inlet of Pike Bay.

Dolomite Lake - closed to all fishing from April 1 to and including May 21.

Grass River - see Wekusko Lake for specific regulation.

Grass River from the CN rail line just north of Iskwassum Lake to the inlet of Reed Lake (including Iskwassum, Loucks, and Flag lakes) - closed to all fishing from May 1 to and including May 31.

Kisseynew Lake and Kissinging River from Kisseynew Lake to Kissinging Lake - closed to all fishing from May 1 to and including May 31. On Kisseynew Lake the walleye limit is 4.

Kissinging Lake and its tributaries, including Bartlett Lake - lake trout limit is 1, walleye limit is 4 and pike limit is 4. All non-residents of Manitoba who fish must be registered and staying with, and obtain a Special Angling Licence (free) from, a licensed Manitoba tourist operator with an allocation for this fishery.

Morgan Lake - closed to all fishing from May 1 to and including June 30.

Morton Lake - walleye limit is 2 and pike limit is 2. All non-residents of Manitoba who fish must be registered and staying with, and obtain a Special Angling Licence (free) from, a licensed Manitoba tourist operator with an allocation for this fishery.

Naosap Lake - walleye limit is 4.

Osborne Lake, Osborne Lake Creek and Wekusko Brook - walleye limit is 4 and pike limit is 4. Closed to all fishing from April 1 to and including June 30.

Pickerel Creek - closed to all fishing, including dip netting, from April 20 to and including May 21.

Reed Lake, including Krug Lake, Jackfish Lake, Jackfish Lake Creek, Woosey Creek between Reed Lake and Halfway Lake, and all other tributaries of Reed Lake, including Grass River from Flag Lake to Tramping Lake - the limits are 2 walleye, 2 pike and 1 lake trout.

Rocky Lake - walleye limit is 4. Goose Bay is closed to all fishing from November 1 to and including May 15.

Saskatchewan River from Grand Rapids Generating Station to 1 km downstream (tailrace channel) - closed to fishing all year.

Snow Creek from Compton Lake to Snow Lake - closed to all fishing from May 1 to and including May 31.

Three Finger Lake - walleye limit is 4.

Wabishkok Lake - closed to all fishing from May 1 to and including May 31.

Wekusko Lake - walleye/sauger limit is 4 and pike limit is 4. Herb Bay north of the hydro line on Wekusko Lake is closed to all fishing from April 1 to and including June 30. Grass River from the outlet on Wekusko Lake on a line from the mouth of Rex Creek, southeast to the southwest corner of Campbell Island to the rapids downstream (including Missipisew and Wuskatasko Rivers) walleye limit is 4 and pike limit is 4. Closed to all fishing from April 1 to and including June 30.

Whitefish Lake and Pineroot River from Whitefish Lake to and including Wabishkok Lake - closed to all fishing from May 1 to and including May 31.

Woosey Creek between Woosey Lake and Morgan Lake - closed to all fishing from May 1 to and including June 30.

Woosey Lake - closed to all fishing from May 1 to and including May 31.

PROTECT MANITOBA'S WATERS AND RESOURCES

STOP AQUATIC INVASIVE SPECIES



IN THE OPEN-WATER SEASON...

BEFORE ENTERING A WATER BODY, you need to...

- ☐ ensure watercraft (e.g., canoe, power boat) and water-related equipment (e.g., fishing gear, bait container) are free of AIS, aquatic plants (e.g., weeds, algae) and mud.
- ☐ drain any residual water from the watercraft and water-related equipment on land away from the water body. This includes water in bait containers.
- ☐ ensure the water-related equipment that were last used in **another** water body than the one you are entering are dried completely OR decontaminated.

AFTER EXITING A WATER BODY and at the shore, you need to...

- ☐ remove AIS and aquatic plants (e.g., weeds, algae) from watercraft and water-related equipment.
- ☐ drain all water from the watercraft and water-related equipment.
- ☐ open/remove drain plugs/valves and leave them open while transporting watercraft over land.

WHEN LEAVING AN AIS CONTROL ZONE, in addition to the exiting steps above, you need to...

- ☐ obtain a Transportation Authorization if you cannot remove the AIS **before** leaving the shore.
- ☐ dispose of all remaining bait (e.g., live or dead) in the trash before leaving the shore.
- ☐ decontaminate watercraft and water-related equipment **before** placing them into **another** water body. Note: if returning to the same water body on the next trip, decontamination is not required.

To decontaminate in the open-water season, you can:

- visit a provincial Watercraft Inspection Station. There is no cost for this service.

OR

- follow the Approved Decontamination Methods (Schedule B and C) in the Aquatic Invasive Species Regulation.

NEED MORE INFORMATION?

Manitoba.ca/StopAIS

or call (toll-free): 1-87-STOP AIS-0

(1-877-867-2470)

***Be part of the solution
and do your part.***

In Manitoba:

- **you must be free of AIS**
- **set fines for AIS offences are in effect year-round**



IN THE WINTER (ICE-COVERED) SEASON...

BEFORE ENTERING A WATER BODY, you need to...

- ☐ ensure water-related equipment are free of AIS, aquatic plants (e.g., weeds), and mud.
- ☐ drain any residual water on land away from the water body. This includes water in bait containers.
- ☐ ensure all water-related equipment (e.g., fishing gear, auger, ice scooper) that were last used in **another** water body than the one you are entering are dried completely (preferably indoors) OR decontaminated (e.g., let all items freeze outside for three days at -10°C or colder).

AFTER EXITING A WATER BODY and at the shore, you need to...

- ☐ remove AIS and aquatic plants (e.g., weeds) from water-related equipment.
- ☐ drain all water. This includes water in bait containers. Note: water in its frozen form does not need to be removed.

WHEN LEAVING AN AIS CONTROL ZONE, in addition to the exiting steps above, you need to...

- ☐ dispose of all remaining bait (e.g., live or dead) in the trash **before** leaving the shore.
- ☐ decontaminate all water-related equipment (e.g., fishing gear, auger, ice scooper) **before** placing them into **another** water body. Note: if returning to the same water body on the next trip, decontamination is not required.

To decontaminate in the winter, you can:

- freeze all water-related equipment for at least three days at -10°C or colder.

OR

- follow the Approved Decontamination Methods (Schedule C) in the Aquatic Invasive Species Regulation.

AND ensure all water-related equipment are dried completely **before** placing them into **another** water body.

North Central Division Regulations

General Closure: May 1, 2021 to and including May 21, 2021. Season opens May 22, 2021 (refer to map on page 8 for North Central Divisional boundaries).

- Barbless hooks must be used.
- No live bait fish.

HIGH QUALITY MANAGEMENT

High Quality Management Waters in the North Central Division are listed below. All have limits of 4 walleye/sauger, 4 pike and 1 lake trout and all pike over 75 cm, all walleye over 55 cm and all lake trout over 65 cm must be released.

Alto Lake	Witchai Lake)	Numakoos Lake
Burge Lake	Hunter Lake	Paint Lake and its
Black Trout Lake	Joey Lake	tributaries
Border Lake	Lasthope Lake	Plumbtree Lake
Chicken Lake	Laurie Lake	Preston Lake
Clarke Creek and Lake	Laurie River (from	Pyta Lake
Conlin Lake	Sask. border east to	Running Bear Lake
Cousins Lake	the railway line)	Sickle Lake
Dafoe Lake	Leftrook Lake	Teal Lake
Dunphy Lake	Little Brightsand Lake	Tenklei Lake
Eager Lake	Little Chipewyan Lake	Tod Lake
Eden Lake	Liz Lake	Tractor Lake
Frances Lake	MacGranachan Lake	Turnbull Lake
Ghost Lake	Matheson Lake	Van Lake
Goldsand Lake	McGavock Lake	Vanderkerckhove Lake
Goose Hunting Lake	Mooswa Creek and Lake	Velde Lake
Grass River (from	Motrik Lake	Willis Lake
Bald Eagle Lake to	Nesbitt Lake	Zed Lake

STOCKED TROUT LAKES

No bow fishing, dip netting, or seining are allowed on stocked trout waters. Annual stocking lists are available from your local Manitoba Agriculture and Resource Development Office (see page 17). The following stocked trout lakes are open to fishing all year. All walleye and pike caught in these waters from May 1 to and including May 15 must be released. No motors, except electric motors, are allowed on those marked with an *.

Bowden Lake	Esler Lake No.2	Little Troy Lake
Crater Lake	* Gemmell Lake	* Mid Lake
* Digney Lake	Hidden Lake	Upper Oswagan Lake
Esler Lake No.1	Leaf Lake	

LAKE SPECIFIC REGULATIONS

Fish Lake and Setting Creek (Fish Creek) and including that part of Setting Lake within 2 km of the mouth of Setting Creek - closed to all fishing from March 15 to and including July 15.

Kiski Lake and Kiski Creek - closed to all fishing from May 1 to and including July 15.

McLaren Creek - closed to all fishing from May 1 to and including May 31.

Nelson River and its tributaries downstream of Kettle Generating Station - closed to brook trout fishing from September 1 to and including September 30.

Nelson River and its tributaries from Whitemud Falls (outlet of Cross Lake) to Kelsey Generating Station, including Duck and Sipiweski lakes - closed to lake sturgeon fishing from May 1 to and including June 15. Within that area; a portion of the Nelson River extending 8 kms upstream and 8 kms downstream of the mouth of the Landing River, including the Landing River is closed to lake sturgeon fishing all year.

Owl Creek - closed to all fishing from May 1 to and including May 31.

Thompson Creek - closed to all fishing from May 1 to and including May 31.

Velde Creek (including Joey Creek) - closed to all fishing from May 1 to and including May 31.

Wintering Lake - walleye limit is 4.

Northeast Division Regulations

Generally open to angling all year (refer to page 8 for Northeast Divisional boundaries).

- Barbless hooks must be used.
- No live bait fish.

HIGH QUALITY MANAGEMENT

High Quality Management Waters in the Northeast Division are listed below. All have limits of 4 walleye/sauger, 4 pike and 1 lake trout, and all walleye over 55 cm, all pike over 75 cm, all lake trout over 65 cm and all Arctic grayling over 40 cm must be released. Only single, barbless hooks may be used on those waters marked with an *.

Acheetamo Lake	Gods Lake	* Nueltin Lake
Aikens Lake	* Goose Lake	Opimengoka Lake
Amphibian Lake	Gunisao Lake	Otter Lake
Anishinabe Lake	Harrop Lake	Pelletier Lake
Apisko Lake	Head Leaf Lake	Poplar River
* Askey Lake	* High Hill Lake	(from Wrong Lake to
Assapan Lake	Holmes Lake	Ontario border)
Assinika Lake	Horseshoe Lake	* Pritchard Lake
* Bagg Lake	Jensen Lake	* Putahow Lake
Bain Lake	Joint Lake	* Putahow River
* Bangle Lake	* John Osborn Lake	(between Putahow
Baralzon Lake	Kagipo Lake	Lake and Nueltin
Bear Lake	Kakeenokamak Lake	Lake)
Bear Head Lake	Kanapakaksis Lake	* Ragged Basin Lake
Bennett Lake	* Kapusta Lake	Recluse Lake
Black Currant Lake	* Kasmere Lake	Red Willow Lake
* Blevins Lake	Kautunigan Lake	Rorke Lake
Bolton Lake	Keschimeeneko	Sasaginnigak Lake
* Booth Lake	Lake	Sawdon Lake
Brad Lake	Kistigan Lake	Semmens Lake
Brisebois Lake	Knee Lake	* Shannon Lake
Brownstone Lake	Lewis Lake	* Silsby Lake
Burnie Lake	Little Duck Lake	* Snyder Lake
Campbell Lake	Little Stull Lake	South Knife Lake
Caron Lake	Long Lake (Berens	Sparrowhawk Lake
Carr-Harris Lake	River)	Stag Lake
Carroll Lake	MacLeod Lake	Stevens Lake
* Chatwin Lake	* MacMillan Lake	Stull Lake
* Corbett Lake	McMurray Lake	* Thanout Lake
Cobham River	Manapaywi Lake	* Thlewiaza River
(from the border	Mantricia Lake	(from Fort Hall Lake
downstream to	Maria Lake	to Nueltin Lake)
Elliot Lake)	Max Lake	Thomas Lake
Commonwealth Lake	Meat Lake	Thunder Lake
Craven Lake	Molson Lake	* Tice Lake
* Cuddle Lake	including Paimusk	* Timewe Lake
Douglas Lake	Creek and all other	Tseeteli Lake
Eakins Lake	tributaries	Utik Lake
Eardley Lake	Munroe Lake	Viking Lake
Edmund Lake	* Muskasew Lake	Warrington Lake
Egenolf Lake	* Muskosemunomin	Waskaiowaka Lake
Elliot Lake	Lake	Wendigo Lake
Fairy Rock Lake	* Nahili Lake	Whiskey Jack Lake
Fishing Lake	Nejanilini Lake	Wrong Lake
* Fort Hall Lake	Nicklin Lake	
Gammon River	North Knife Lake	

LAKE SPECIFIC REGULATIONS

Bear Lake - all non-residents of Manitoba who fish must be registered and staying with, and obtain a Special Angling Licence (free) from, a licensed Manitoba tourist operator with an allocation for this fishery.

Berens River from the mouth upstream to Sturgeon Falls, including the Etonami River upstream to Makik Falls and including the North Etonami River upstream to Miskomapiinna Rapids - closed to all fishing from April 5 to and including May 14.

Bloodvein River from the mouth upstream to Meekisiwi Rapids - closed to all fishing from April 5 to and including May 14.

Bradbury River - closed to all fishing from April 5 to and including May 14.

Gods Lake - all non-residents of Manitoba who fish must be registered and staying with, and obtain a Special Angling Licence (free) from, a licensed Manitoba tourist operator with an allocation for this fishery. A High Quality Management Lake.

Gods River (from Gods Lake to Great Bear Falls) - all brook trout must be released.

Molson Lake and its tributaries (except Paimusk Creek) - closed to fishing from May 1 to and including May 21. All non-residents of Manitoba who fish must be registered and staying with, and obtain a Special Angling Licence (free) from, a licensed Manitoba tourist operator with an allocation for this fishery. A High Quality Management Lake.

Nelson River and its tributaries - closed to brook trout fishing from September 1 to and including September 30.

Nueltin Lake - all non-residents of Manitoba who fish must be registered and staying with, and obtain a Special Angling Licence (free) from, a licensed Manitoba tourist operator with an allocation for this fishery. A High Quality Management Lake.

Paimusk Creek - closed to fishing from May 1 to and including May 31. All non-residents of Manitoba who fish must be registered and staying with, and obtain a Special Angling Licence (free) from, a licensed Manitoba tourist operator with an allocation for this fishery. A High Quality Management Water.

Pigeon River from the mouth upstream to Sturgeon Falls - closed to all fishing from April 5 to and including May 14.

Utik Lake - all non-residents of Manitoba who fish must be registered and staying with, and obtain a Special Angling Licence (free) from, a licensed Manitoba tourist operator with an allocation for this fishery.

Family Fishing Weekends

Summer and Winter Family Fishing Weekends will be held on June 12-13, 2021 and February 19-21, 2022, across Manitoba (excluding federal parks). During these weekends, people wishing to fish may do so without acquiring a licence. All other rules and regulations will apply. Conservation limits apply to those angling without a licence, who would normally require one. Please note specific lake regulations. For more information, call 204-945-6784.

Angling Safety Around Fishing Gear

Be careful and stay a safe distance from commercial fishing gear, buoys and floats when fishing or boating. Its recommended not to travel between buoys as commercial nets can be set between buoys and you may tangle your fishing or boating equipment. Buoys and floats can be different colours.



Fishing Regulations and Status Indian People

The Natural Resources Transfer Agreement, which forms part of the Constitution Act (1930), provides that Indian people have the right to fish for food on all unoccupied Crown lands and on any other lands to which they may have a right of access.

Recognizing the Treaty and constitutional rights of Indian people, Manitoba Agriculture and Resource Development considers that status Indians:

- Do not require a licence to fish for food by angling or other means.
- Do not require an angling licence to fish for recreational purposes or to participate in a competitive fishing event, but must follow all regulations when not fishing for food.
- Are not subject to gear restrictions such as the use of gill nets or the number of lines that can be used by angling, however, any unattended gear must be clearly marked with the owner's name and treaty number.
- Except for conservation closures, are generally not restricted to seasons, limits or areas.
- May angle in stocked trout waters but may not use nets or other methods of fishing.
- May not block more than two-thirds of a river or stream with a net or other device.
- May not fish within 23 metres of a fish ladder or fishway.
- May not sell fish caught under status Indian fishing rights or give fish to a non-Indian person.
- May transport fish from the catch point directly to their nearest residence.
- Must obtain a Fish Transportation Loadslip if fish in excess of a regular limit are to be transported to a location other than their nearest residence.
- While employed as guides or outfitters, may not fish using their treaty or constitutional rights in any manner that could benefit their employer or their business.
- When exercising their rights, are required to carry proof of status.

Non-Indian people may accompany Indian people that are fishing but may not help them to exercise their food fishing rights. For example, non-Indian people could not set or lift nets, however, they could assist in transporting fish while accompanying a status Indian person.

For more information, please contact the nearest Manitoba Agriculture and Resource Development Office, or telephone 204-945-6784 in Winnipeg, 1-800-214-6497 outside Winnipeg or visit: manitoba.ca.

Manitoba Agriculture and Resource Development Offices

Head Office (Winnipeg)	204-945-6784
Eastern Region (Lac du Bonnet)	204-345-1450
Western Region (Dauphin)	204-648-6696
Western Region (Swan River)	204-734-8350
Central Region (Gimli)	204-642-6070
Northwest Region (The Pas)	204-620-5311
Northeast Region (Thompson)	204-677-6648
For general information please call 204-945-6784 or 1-800-214-6497	

TURN IN POACHERS (TIP) LINE 1-800-782-0076

Common Manitoba Fish Species

WALLEYE

YELLOW PERCH

BULLHEAD

SAUGER

BURBOT

CHANNEL CATFISH

NORTHERN PIKE

COMMON CARP

SMALLMOUTH BASS

GOLDEYE

FRESHWATER DRUM

LAKE TROUT

MOONEYE

WHITE BASS

BROOK TROUT


Come Catch Us On the Web

Manitoba Fisheries..... manitobafisheries.com
 Aquatic Invasive Species (AIS) Manitoba.ca/StopAIS
 Fish Futures Inc..... fishfutures.net
 Manitoba Wildlife Federation mwf.mb.ca
 Travel Manitoba..... travelmanitoba.com
 Manitoba Lodges & Outfitters Association..... mloa.com
 FLIPPR..... flippr.ca

Manitoba Recreational Fishing League..... mwf.mb.ca
 Walleye Anglers Association of Manitoba..... walleyeanglers.mb.ca/
 Mid-Canada Marine and Powersports Dealers Assoc. mmpda.ca
 Lake Information for Anglers..... manitobafisheries.com
 Intermountain Sport Fish Enhancement isfe.ca
 Manitoba Fly Fishers Association mffa.org
 Swan Valley Sport Fishing..... swanvalleysportfishing.com



Travel Manitoba Master Angler Program

anglers.travelmanitoba.com



Length Requirements

Species	Minimum Length
Arctic Char	51 cm (20 in)
Arctic Grayling	46 cm (18 in)
Black Crappie	30.5 cm (12 in)
Brook Trout	51 cm (20 in)
Brown Trout	51 cm (20 in)
Bullhead	30.5 cm (12 in)
Burbot	76 cm (30 in)
Common Carp	76 cm (30 in)
Channel Catfish	86.5 cm (34 in)
Freshwater Drum	61 cm (24 in)
Goldeye	35.5 cm (14 in)
Lake Sturgeon	109 cm (43 in)
Lake Trout	89 cm (35 in)
Lake Whitefish	56 cm (22 in)
Largemouth Bass	46 cm (18 in)
Mooneye	35.5 cm (14 in)
Muskellunge	79 cm (31 in)
Northern Pike	104 cm (41 in)
Rainbow Trout	51 cm (20 in)
Rock Bass	25.5 cm (10 in)
Sauger	46 cm (18 in)
Smallmouth Bass	46 cm (18 in)
Splake	51 cm (20 in)
Sucker	46 cm (18 in)
Sunfish	18 cm (7 in)
Tiger Trout	51 cm (20 in)
Tullibee (Cisco)	40.5 cm (16 in)
Walleye	71 cm (28 in)
White Bass	38 cm (15 in)
Yellow Perch	33 cm (13 in)

How to Measure a
Fish's Total Length



Minimum Length

Master Angler Awards Program Rules and Regulations

1. Registered fish must be caught in Manitoba in accordance with provincial angling regulations.
2. Anglers must use a hook and line to make the catch.
3. Photo Requirements:
 - All submissions must have a horizontal measurement photo of the entire length of the fish against a ruler, measuring tape or bump board to qualify for a Master Angler Award.
 - An action photo is optional, but highly encouraged.
 - We will not accept submissions with images showing vertical gill, eye, weigh scale or fish stringer holds.
 - We will not accept catches with pictures of frozen fish declared as released.
 - We will not accept photos that are thumbnails or a screen capture from a mobile device or desktop computer.
 - Photos with blood in them will not be posted on the Master Angler website.
4. Please note that all pictures provided will become the property of Travel Manitoba and may be used for publishing on the web site or in published materials.
5. Qualifying fish must be submitted digitally through the Master Angler Awards website or Master Angler mobile app. Official paper entry form available for download on Master Angler Awards website. Mail-in submissions must meet all requirements in rule #3.
6. Registered fish must be caught in Manitoba in accordance with provincial angling regulations.
7. Anglers must use a hook and line to make the catch.
8. Photo Requirements:
 - All submissions must have a horizontal measurement photo of the entire length of the fish against a ruler, measuring tape or bump board to qualify for a Master Angler Award.
 - An action photo is optional, but highly encouraged.
 - We will not accept submissions with images showing vertical gill, eye, weigh scale or fish stringer holds.
 - We will not accept catches with pictures of frozen fish declared as released.
 - We will not accept photos that are thumbnails or a screen capture from a mobile device or desktop computer.
 - Photos with blood in them will not be posted on the Master Angler website.
9. Please note that all pictures provided will become the property of Travel Manitoba and may be used for publishing on the web site or in published materials.
10. Qualifying fish must be submitted digitally through the Master Angler Awards website or Master Angler mobile app. Official paper entry form available for download on Master Angler Awards website. Mail-in submissions must meet all requirements in rule #3.
11. Submissions need to be made within one year of the catch to be eligible for an award.
12. Only one bronze, silver, or gold badge and release crest will be awarded to any one angler, but certificates will be presented for all qualifying fish. Different specialist badges will be awarded for each species (one per species).

For more information contact:

The Manitoba Master Angler Program

Tel: 1-800-665-0040

Email: MasterAngler@travelmanitoba.com

Website: anglers.travelmanitoba.com

****Digital Certificates****

All anglers who provide an email address will receive a digital copy of their certificate for all non-level achieving catches and catch and release recognition. If anglers prefer a printed certificate, they may request one by contacting Master Angler directly. Anglers will continue to receive a mailed hard copy for the one-time "First Master Angler" and when a new level or specialist badge is achieved.

L'IL ANGLER PROGRAM

Geared toward children 12 years of age and younger, the program encourages kids to get hooked on fishing and gain a little recognition. It's easy and it's fun!



When little anglers catch their first fish, they, or their parents, apply online with a photo. Travel Manitoba will send the L'il Angler a one-time embroidered crest and a certificate of achievement. There is no length requirement and the fish can be any of the qualifying species found in Manitoba.

For more information or to enter your catch,
go to **anglers.travelmanitoba.com**

Manitoba

Discover exceptional **FISHING** in the heart of Canada

EPIC EXPERIENCES

Our website is your #1 source for all things fishing in Manitoba.

► huntfishmanitoba.com

BIG IDEAS

Check out our blog for informative articles, photo essays and inspiring videos. Our Facebook, Instagram and YouTube offer hours of exclusive content.

- *Blog:* huntfishmanitoba.com/blog
- *Facebook:* [Fishing & Hunting in Manitoba](#)
- *Instagram:* [@huntfishmb](#)
- *YouTube:* youtube.com/huntfishmb

DIRECT TO YOUR INBOX

Get monthly e-newsletters packed with stories, current hot bites, contests and more.

► huntfishmanitoba.com/newsletter-signup

MASTER ANGLER PROGRAM

Download our app to be part of one of North America's most popular fishing recognition programs.

► anglers.travelmanitoba.com

**HUNT
FISH
MB**


Manitoba
CANADA'S HEART  BEATS



IT ONLY TAKES **AN EMBER** TO START A **WILDFIRE**

Unattended and abandoned outdoor fires are leading causes of preventable wildfires in Manitoba. Don't let your campfire get away.

**DROWN. STIR.
REPEAT UNTIL COLD.**

**REPORT WILDFIRES
1-800-782-0076**

Manitoba 



Main Lodge with Housekeeping Cabins
Boat Rentals • Bait & Tackle • Ice
4 Fly-in Outposts • Walleye & Northern Pike Fishing
Spring Bear Hunts • Moose Hunts

Drive-to Resort Fly-in Outposts
*Where the Road Ends &
Adventure Begins!*

BOOK YOUR TRIP TODAY!
204-268-0472

info@wallacelakelodge.com
wallacelakelodge.com



NEW!



www.AnglersEdgeMapping.com

ANGLER'S EDGE MAPPING Premium Hydrography

Detailed. Accurate. Easy to read.



**Now available
à la chart!
for mobile devices**



Avenza
Maps®




canadamapsales.com

WE'LL POINT THE WAY

CanadaMapSales.com is your one-stop internet shopping centre for maps from across Canada. We have maps to guide you as you hike, sail, fish and explore.

We offer:

- Topographic maps
- Boating charts and angling maps
- Aeronautical charts
- Wall maps
- Posters and books
- Highway maps & atlases
- Canoe route maps
- Hiking trail maps
- Land ownership maps
- Backroad mapbooks

Many of the maps you need are now available on waterproof paper.

Order online at canadamapsales.com or call toll free 1-877-627-7226.

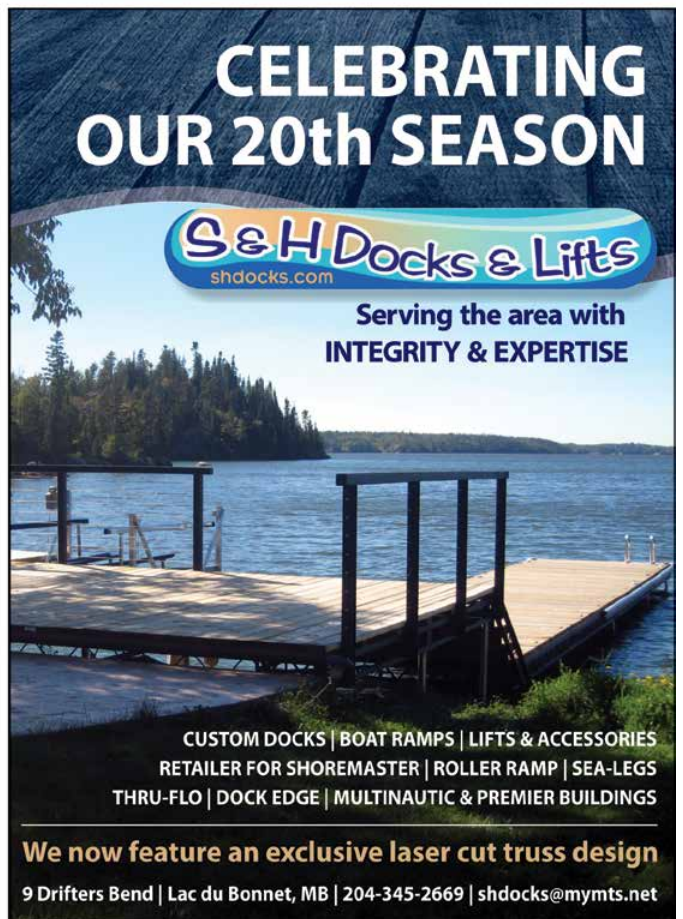


Manitoba 

CELEBRATING OUR 20th SEASON

S&H Docks & Lifts
shdocks.com

**Serving the area with
INTEGRITY & EXPERTISE**



CUSTOM DOCKS | BOAT RAMPS | LIFTS & ACCESSORIES
RETAILER FOR SHOREMASTER | ROLLER RAMP | SEA-LEGS
THRU-FLO | DOCK EDGE | MULTINAUTIC & PREMIER BUILDINGS

We now feature an exclusive laser cut truss design

9 Drifters Bend | Lac du Bonnet, MB | 204-345-2669 | shdocks@mymts.net

INSURANCE PROGRAMS THAT **SAVE** YOU MONEY

SAVE AN
ADDITIONAL
15% - 20%

ON YOUR
INSURANCE PREMIUM



**WINNIPEG POLICE
& SUPPORT STAFF
MILITARY**

**WINNIPEG POLICE
CREDIT UNION MEMBERS**



**UNITED FIRE
FIGHTERS,
PARAMEDICS
& SUPPORT STAFF**



**MANITOBA
TEACHERS
SOCIETY**



**GRAND BEACH
& WHITESHELL
COTTAGE OWNERS**



La Salle
Insurance



www.lasalleinsurance.com

6 LOCATIONS TO SERVE YOU!

Visit us online to get a
quote today!



**Riding Mountain
National Park**

**Parc national du
Mont-Riding**

**Watercraft inspections are mandatory prior to launching in
Riding Mountain National Park (RMNP).**

A national park fishing licence is required to fish in RMNP.

For more info on the Aquatic Invasive Species program and fishing in RMNP:
<https://www.pc.gc.ca/en/pn-np/mb/riding/activ/rec/activ1-bot>.

**Les inspections d'embarcation sont obligatoires avant
la mise à l'eau au parc national du Mont-Riding (PNMR).**

Un permis de pêche des parcs nationaux est requis pour pêcher au PNMR.

Pour plus de renseignements sur le programme des espèces aquatiques
envahissantes et sur la pêche au PNMR :
<https://www.pc.gc.ca/fr/pn-np/mb/riding/activ/rec/activ1-bot>.



CLEAN / NETTOYEZ



DRAIN / VIDEZ



DRY / SÉCHEZ



**Parks
Canada**

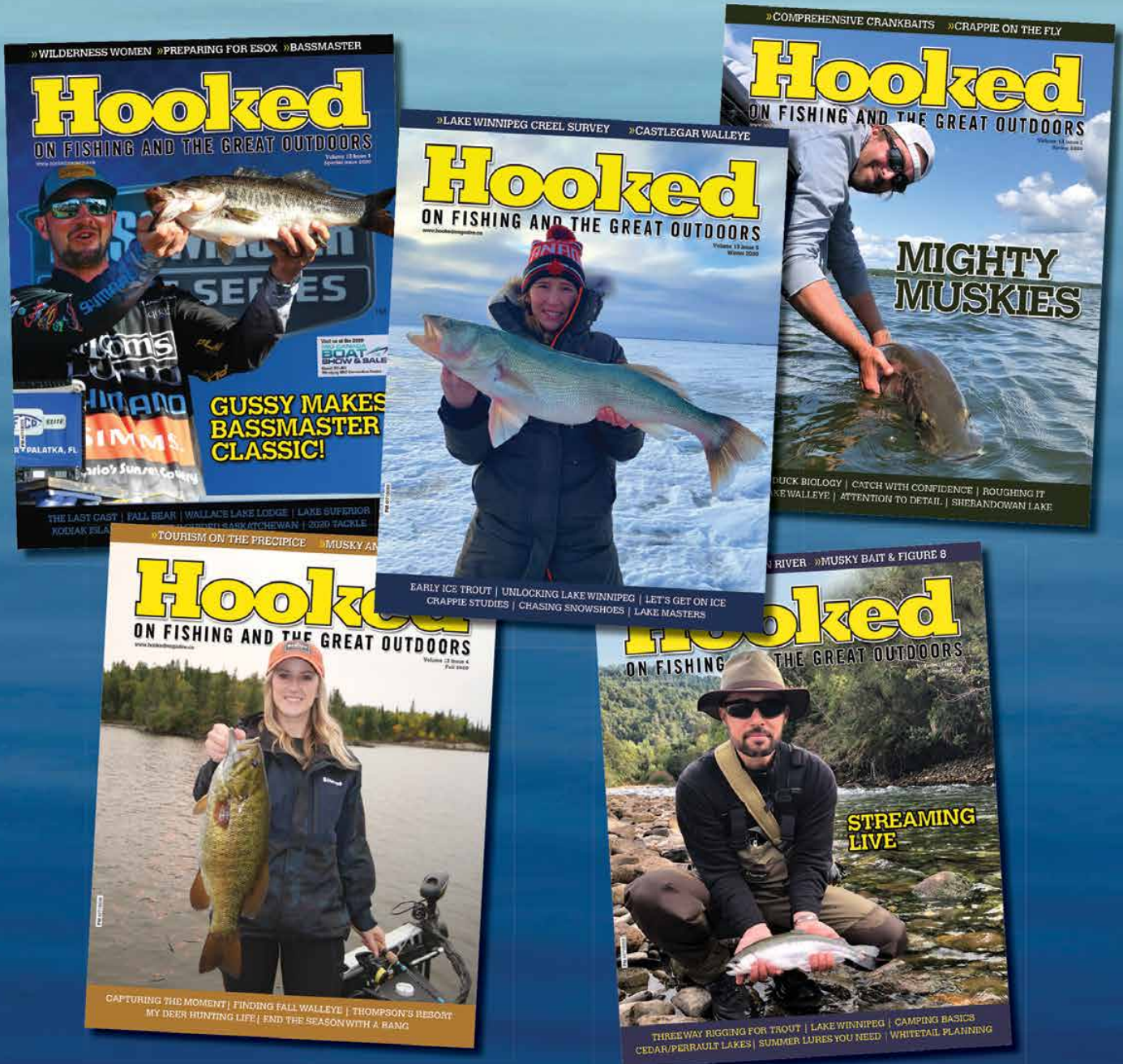
**Parcs
Canada**

Canada

Hooked

MAGAZINE

ON FISHING AND THE GREAT OUTDOORS



SUBSCRIBE TODAY!
www.hookedmagazine.ca
ONLY \$25 FOR 5 ISSUES



Cabela's 

FROM DAWN TO DUSK

Winnipeg – 580 Sterling Lyon Parkway



Summer

with



DANNY'S BARBEQUE & SMOKEHOUSE

We'll bring the flavour!

www.dannyswholehog.ca

Whether you are camping, fishing or hunting this summer, Danny's Whole Hog & BBQ will bring the flavour!

From hog roasts to boil-a-bag pulled meats and everything in between, we have your summer experience covered.



Visit us online!

shop.dannyswholehog.ca

call 204.344.5675 or

text 431.997.BBQS

to order your favourites today!

Burntwood LAKE LODGE MANITOBA



**MAIN LODGE & OUTPOST CAMPS
WALLEYE & NORTHERN PIKE FISHING
MOOSE HUNTING**



1-877-358-2259
www.burntwood.com



WalleyeManitoba.com

BUDD'S
GUNISAO LAKE LODGE

(517)676-FISH   



We Take Care Of Everything For You

- Delicious meals • 18 ft Alaskan Lund Boats with 40hp Yamaha 4-stroke motors
- Deluxe private accommodations and daily housekeeping services

PRINCECRAFT®

DOMINATE THE WATERS®



YOUR ONE STOP FUN SHOP
84 Severn Cres., Thompson, MB R8N1M6
www.nickelcitymotors.com | sales@nickelcitymotors.com



2210 Park Avenue, Brandon, MB R7B 0S1
Office: 204-728-2699 | Fax: 204-727-4173



Phone: 1-204-237-5800 | Toll Free: 1-888-968-3330
sales@rondsmarine.com | www.rondsmarine.com



**GUARANTEED
COMFORT**

Go Ahead... Make Waves

**No matter what
the wave conditions
Smooth Moves
has your back.**

**Two suspension
systems to ensure
every boat ride is
comfortable.**

**Isn't it time you wave
goodbye to back pain?**

Ride the Waves in Comfort with



Smooth Moves®

AIR

Pneumatic suspension
with a built in air
compressor that
adjusts at the touch of
a button



Seat Not Included

Ultra

Mechanical suspension
with four springs and a
hydraulic shock



Smoothmovesseats.com

HAVE YOU TRIED THE NED RIG?

ZMAN®

FINESSE SHROOMZ™ JIGHEADS



- Designed for Midwest finesse style fishing, aka the Ned Rig
- Unique wire keeper is welded directly to the hook shank to make rigging simple and holds ElaZtech baits securely

NEOLOCKZ™ HD JIGHEADS



- Heavy-duty Mustad® UltraPoint® hooks
- Split keeper design is easy to rig and holds ElaZtech® & conventional soft plastics securely

ELA ZTECH

10X Tough SPACE-AGE SOFT PLASTICS

*Shown in actual size



FINESSE T.R.D.™

The 2.75" Finesse TRD (The Real Deal) is designed specifically for the Midwest finesse style of fishing, more commonly known as the Ned Rig, which has been gaining momentum nationwide as a subtle and easy-to-master, yet amazingly effective, presentation.



HULA STICKZ™

The right bait can be the difference between a big day and coming up empty, and when finesse tactics are in order, the Hula StickZ is the right bait! Try it paired with a Finesse ShroomZ™ jighead - or Texas-rigged - and watch this buoyant bait stand up off the bottom with its tentacles brought to life.



TRD CRAWZ™

An ultra-realistic crayfish imitation, the TRD CrawZ was designed for Ned-rigging but is also ideal for use as a finesse jig trailer and even as a saltwater fiddler crab imitation thanks to its buoyant claws that stand the bait up in a natural defensive posture when dragged along the bottom.



702 Lakeview Drive
Kenora, Ontario
P9N 3P7
(807)468-4637

10 Keenleyside St. Unit C
Winnipeg, MB
R2L2B9
(204)221-7488



THE FISH OF 10,000 CASTS

Whether you spell it musky or muskie, the "fish of 10,000 casts" is the ultimate catch. The Pro-V Musky is designed for both rough and shallow water, with maximum deck space and custom storage boxes for the big lures that musky love.

**MASSIVE, COMFORTABLE
BOW CASTING DECK**

**TWO CUSTOM MUSKY-SIZED
LURE BOXES**

**VERSATILE HULL FOR
SHALLOW OR ROUGH WATER**

**CENTER BOW ROD LOCKER
WITH AUTO-LIFT**





FEEL THE ACTION™

EAGLE®

Representing the rich rod building history of Fenwick®, the Fenwick® Eagle® rod series features proven Classic Fenwick® Actions for targeting nearly any species. Built from 24 Ton graphite and with the accumulated knowledge of seventy years of tinkering and testing with the best, the Fenwick® Eagle® series connects tradition and technology. Upgraded stainless steel guides with aluminum oxide inserts provide increased casting performance with less friction, while the blank through construction and minimal reel seat transmit even the lightest bites.



TAC
HANDLE

SS GUIDES

©2021 Pure Fishing, Inc.

www.fenwickfishing.com

the fishin' hole



"Everything for
Sport Fishing"

Visit our mobile friendly
thefishinhole.com

or call us at 1.800.661.6954

Retail stores in: Edmonton | Saskatoon | Winnipeg | Calgary



100% CANADIAN OWNED – SINCE 1975



THEFISHINHOLECANADA



THEFISHINHOLECA